

(Pages : 3)

H – 2938

Eighth Semester B.Tech. Degree Examination, November 2019

13.803 : COMPUTER COMMUNICATIONS (T)

(2013 Scheme)

Time : 3 Hours

Max. Marks : 100

PART – A

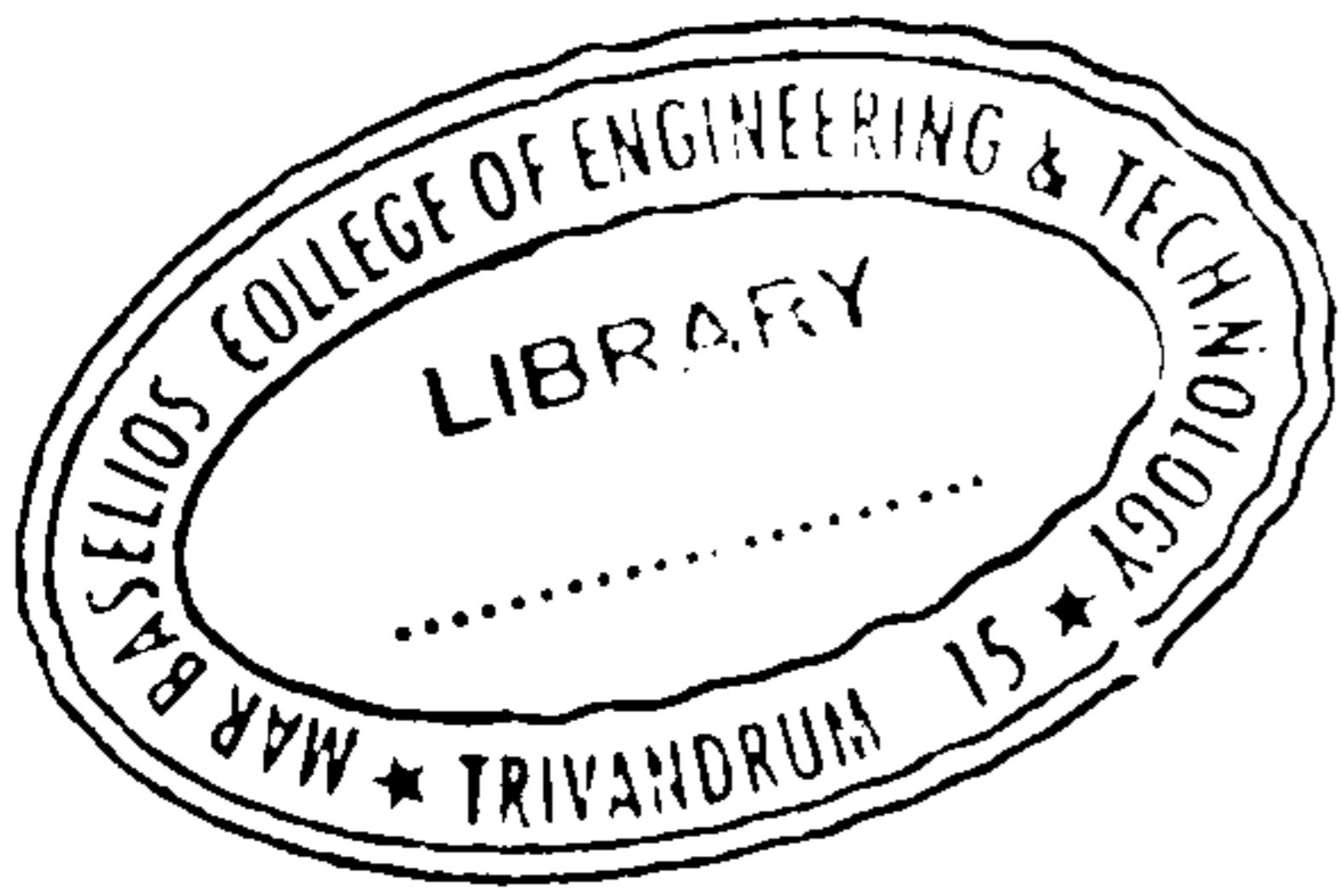
Answer **all** questions.

1. What are the two reasons for using layered protocols?
2. Briefly discuss Stop and Wait method of flow control.
3. Explain the basic principle of fiber optic communication.
4. Differentiate between Virtual Circuits & Datagram Networks.
5. Briefly explain the major advantages of IPV6 over IPV4.
6. Discuss the protocol that sends the error messages back to the source.
7. Differentiate between Flow control and Error control.
8. Mention the advantages and disadvantages of subnetting.
9. Mention any four SSL protocols
10. What are the services provided by IPSec?

(10 × 2 = 20 Marks)

P.T.O.





PART – B

Answer **one** questions from each module, **20** marks each.

Module – I

11. (a) Explain briefly with relevant examples, the four levels of addresses that are used in the Internet employing the TCP/IP protocol. **10**
- (b) Explain sliding window protocol. What is the application of this protocol? Show that implementation of 1-bit sliding window protocol. **10**

OR

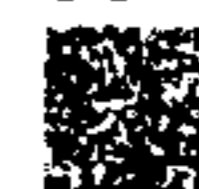
12. (a) What are the causes of congestion? How does TCP congestion control work? Differentiate between open loop congestion control and closed loop congestion control. **12**
- (b) Distinguish between Coaxial Cable and Twisted Pair. Which connector types are used for the coaxial cabling and UTP in computer networks? **8**

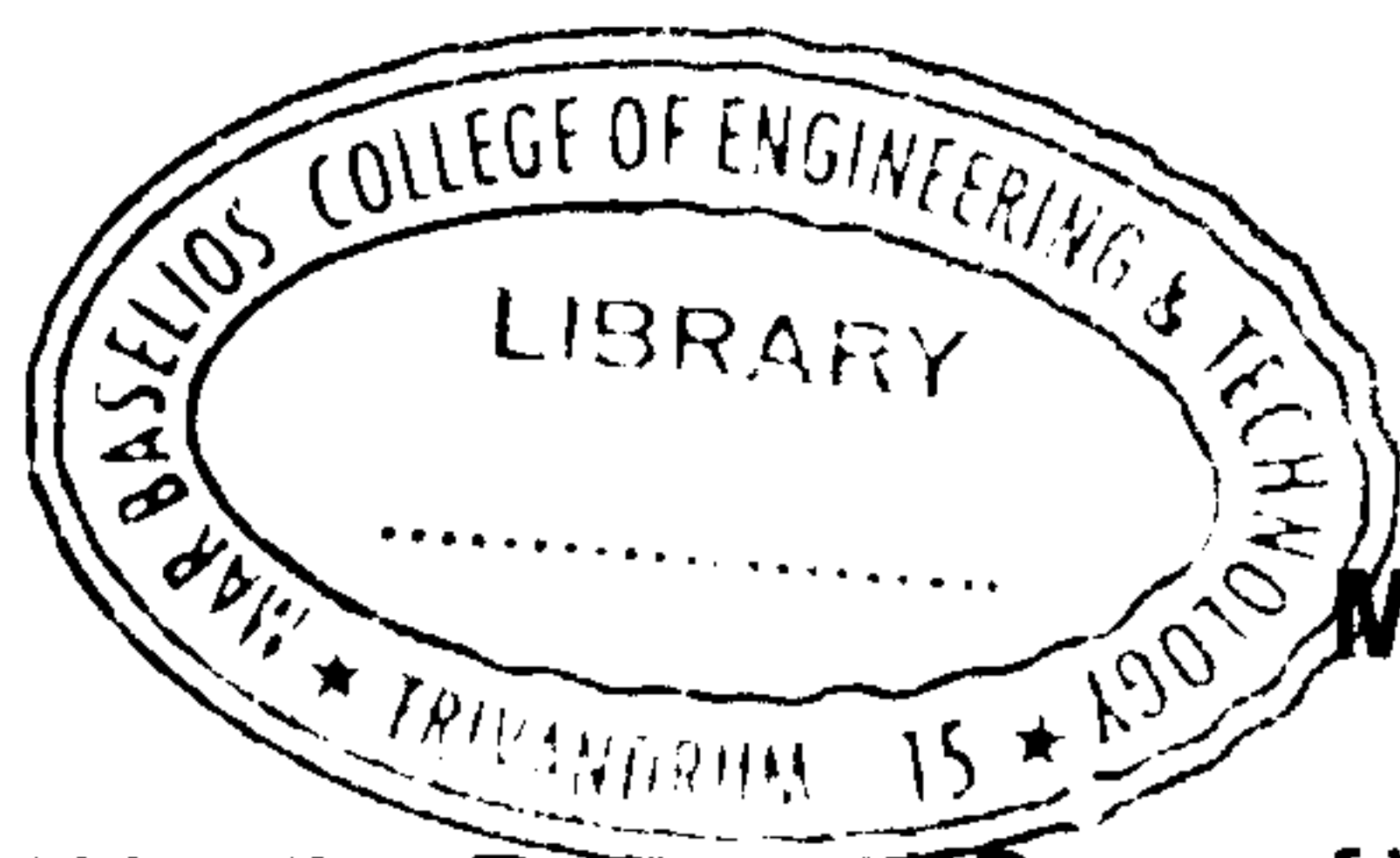
Module – II

13. (a) Differentiate between Distance Vector Routing and Link State Routing. **12**
- (b) Briefly explain Inter Autonomous System Routing (Border Gateway Protocol). **8**

OR

14. (a) Briefly explain the working of Address Resolution Protocols (ARP) with suitable diagram. **15**
- (b) Differentiate between Broadcast and Multicast routing. **5**





Module – III

15. (a) Write the Pros and Cons of WLAN. 5
- (b) Write the steps that are followed by CSMA/CD to recover from a collision. 15

OR

16. (a) Distinguish between Bridges and LAN switches. Also explain its applications. 10
- (b) Briefly explain Spanning Tree algorithm with an example. 10

Module – IV

17. (a) What are the types of attacks addressed by message authentication? 10
- (b) Explain in detail about password management. 10

OR

18. (a) What is a firewall? Explain its characteristics. 12
- (b) List four techniques used by firewalls to control access and enforce a security policy. 8

(4 × 20 = 80 Marks)

